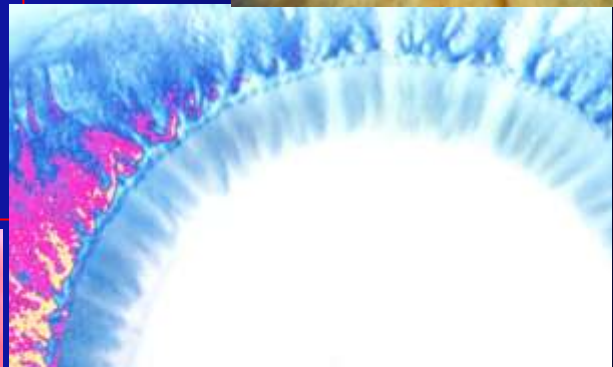


IRIS-ARCHEOLOGY

VOL. 2nd

ART and POETRY

Harmony,
it calls on the shape
from which it emanates
in the beauty of an instant
of perception.
There I am,
ready to live you
in an eternal moment.
Love,
it takes fire in the heart,
getting rid of the bonds
of that which was,
an ancient time.
Senses perceive
the tireless weaving
of your work.



Dr. Lo Rito Daniele

Preface

The Man who comes into contact with shapes and images feels that in his astral dimension there are some feelings driving him to reflect and enter the spiritual world. The feelings of the soul activate the body of emotions. The astral body will move towards the spiritual world, driven by the will purified by longing.

Actually we experience the symbol in the conscious and unconscious inwardness, giving it a dimension of life. The symbols themselves begin to work on the living matter that our body places at disposal. They become creators, craftsmen who mould and educate the human being.

That which we see coming from matter, which lies on the iris as colour and structure, creates dynamism in the evocative relation with the astral body. When Man perceives this astral awakening, he is driven towards the dimension of the spirit in order to enter the superior world. The symbol does not have to be seen or perceived with the power of thought, but it has to live again in the human soul. The individual becomes an unexpected source of life for the symbol itself, as if Man managed to resurrect that which had been dead for centuries from an inanimate matter.

It had been sleeping for years in that small iris, nobody had ever noticed it in its dimension. Now it is reawakened by the observer, the seeker. It comes again to life to the point of giving movement and dynamism.

The power is expressed by the meeting of the symbol with the astral body. In its turn, this activity affects the etheric body, the physical body and the Ego (spirit).

Man experiences the symbol first with the astral body and then with the spirit and the physical body, drawing harmony, joy and tune. As if there did not exist a sharp distinction between a body and another, but they merged in a single unit.

Actually, we can summarize what we have so far discussed:

| | |
|-----------------|---|
| Physical world | - Perception of the senses |
| Etheric world | - Senses perceive |
| Astral world | - Images - Imagination (as vital element for the spirit) |
| Spiritual world | - Sense of harmony - Sense of unification - Inspiration (as vital element for the spirit) |

“We have seen that if symbols and images, as well as the relations of form and numbers, derive from the nature and essence of the superior worlds, they can give rise to astral powers in the soul, when it welcomes them within itself. They take the shape of representations, thoughts, ideas and feelings exercising a moulding effect”¹.

The symbol acts both on the possessor of the structure and on the observer, making no difference in itself.

The one who looks at the iris feels that the symbol acts on him, sometimes intensely, to the point of touching the physical body and the neurovegetative system. The interaction levels can affect the way of thinking, feeling or willing, according to the power and selectivity of the symbol or the sensitivity of the human body.

Clearly, there will be all the shades related to the mutual interaction of the three levels with the superior bodies. The resultant will be the addition among power of the symbol, its biographic action on the individual story and reactivity of a tripartite man with the respective superior bodies.

¹ R. Steiner “Simboli e segni occulti” Ed. Arcobaleno